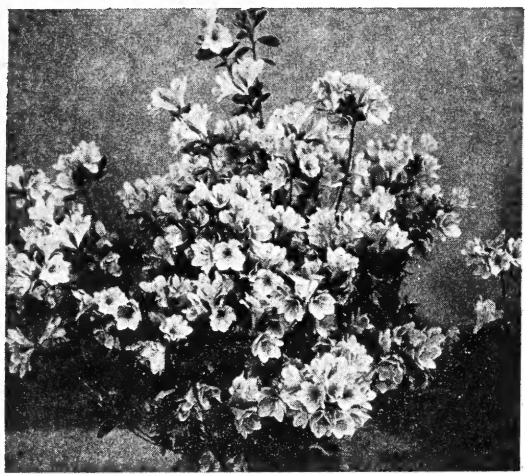


62

[1957]

Ornamental Plants For Southern Gardens



Kurume Azaleas

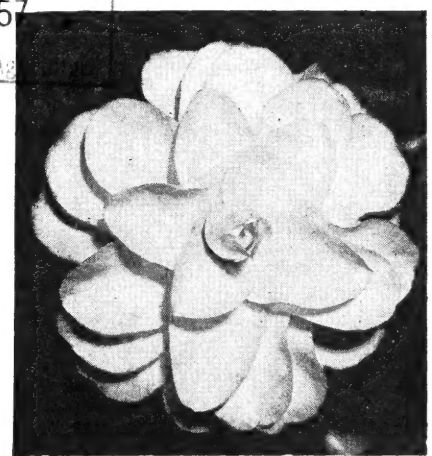


Dwarf Golden Arbor Vitae

LIBRARY
RECEIVED
★ MAR 19 1957
U. S. Department of Agriculture



Field Grown Camellias



Purity

Monticello Nursery Co.

"HOME OF THE FAMOUS MAHAN PECAN"

MONTICELLO, FLORIDA



ABELIA GRANDIFLORA (Glossy Abelia). Glossy leaves on purplish red stems. Pinkish white flowers during the summer. Disease and insect free. Excellent for border, hedge or mass planting.

Bare Root	Each
18-24 in.30
2- 3 ft.40
3- 4 ft.60

B&B Double above prices.



ARDISIA CRENULATA (Christmas Berry). Compact evergreen shrub with thick dark green foliage and a mass of red berries. Likes a shady situation.

8-12 in. B&B.....	.75
12-18 in. B&B.....	1.00
18-24 in. B&B.....	1.50
2- 3 ft. B&B.....	2.50

BERBERIS ATROPURPUREA (Red Leaf Barberry). Evergreen in the lower south, red foliage in spring turning to purplish red late in season.

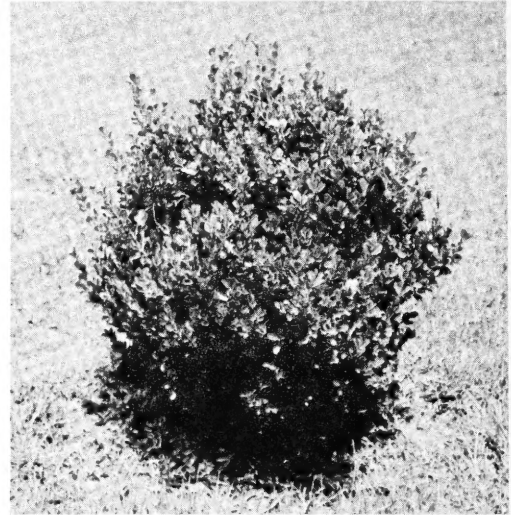
12-18 in. B&B.....	1.25
18-24 in. B&B.....	1.75
2- 3 ft. B&B.....	2.25
1 Gallon cans.....	1.25

BERBERIS SARGENTIANA (Sargents Barberry). Evergreen barberry with thorns. Medium habit of growth. Good for base plantings, also borders.

12-18 in. B&B.....	1.25
18-24 in. B&B.....	1.75
2- 3 ft. B&B.....	2.25

BUXUS HARLANDI (Korean Boxwood). Dark green elongated leaves, rather square at the ends. Grows thick and round naturally and requires very little pruning.

6- 8 in. B&B.....	.60
8-12 in. B&B.....	.75
12-15 in. B&B.....	1.10



BUXUS JAPONICA (Japanese Boxwood). Rather fast growing for a boxwood, compact evergreen shrub well suited to southern climate.

BUXUS SEMPERVIRENS (English Boxwood). The very popular variety so much used for edging and formal gardens. Glossy, dark green foliage. Price above two varieties.

8-12 in. B&B.....	.75
12-15 in. B&B.....	1.00
15-18 in. B&B.....	1.25

CALLISTEMON RIGIDUS (Bottle Brush). Evergreen with narrow and long leaves. Has orange red, round bloom several inches long resembling the type of brush used in cleaning bottles, hence its name.

1 Gallon cans—18-24 in.....	1.50
1 Gallon cans— 2- 3 ft.....	2.00

CLEYERA JAPONICA. A fine evergreen shrub with rather thick glossy leaves and creamy white fragrant flowers. Berries red in early fall.

18-24 in. B&B.....	1.75
2- 3 ft. B&B.....	2.50
1 Gallon cans.....	1.00

ELEAGNUS PUNGENS. Rather fast in growth. Leaves silvery underneath and has very fragrant small blooms in the fall followed by fruits turning reddish bronze. Fruits are edible.

18-24 in. B&B.....	1.50
2- 3 ft. B&B.....	2.50
1 Gallon cans.....	1.25

FEIJOA SELLOWIANA (Pineapple Guava). A hardy compact evergreen shrub with gray green foliage. Purplish red flowers.

18-24 in. B&B.....	1.75
2- 3 ft. B&B.....	2.50

GARDENIA FLORIDA (Cape Jasmine). The well-known Gardenia of the South. Waxy white very sweet scented flowers and shiny dark green foliage.
 1 Gallon cans..... 1.00



LOQUAT (Jap. Plum). An exotic large leaved evergreen tree, rather dwarf in habit. Blooms in November, and bears oblong yellow fruits.
 2-3 ft. B&B..... 2.00
 3-4 ft. B&B..... 2.75
 4-5 ft. B&B..... 4.00
 5 Gallon cans..... 3.00



ILEX CORNUTA BURFORDI (Chinese Holly). This is the Holly that has such shiny dark green leaves that they appear to be varnished. Rather slow in growth but makes a beautiful compact tree with red berries.
 1 Gallon cans—12-18 in..... 1.00
 1 Gallon cans—18-24 in..... 1.25
 18-24 in. B&B..... 2.00
 2- 3 ft. B&B..... 3.25

MAHONIA BEALI (Japanese Holly Grape). Thick green deeply serrated foliage spread out Nandina fashion. Clusters of yellow flowers in winter are followed by purple berries. Does best in some shade.
 12-18 in. B&B..... 1.50
 18-24 in. B&B..... 2.00
 1 Gallon cans..... 1.25

ILEX ROTUNDIFOLIA (Box Leaf Holly). A dwarf variety with small almost round leaves, quite compact in growth, and hardy. Fine for use where a plant not over 2 feet high is needed.
 1 Gallon cans— 8-12 in..... 1.00
 1 Gallon cans—12-18 in..... 1.50

NANDINA DOMESTICA. The well-known red berried plant. Plants in sun have red foliage in winter also; turning back green in the spring.
 12-18 in. B&B..... 1.00
 18-24 in. B&B..... 1.50
 2- 3 ft. B&B..... 2.00

JASMINUM PRIMULINUM (Primrose Jasmine). Graceful, drooping branches and yellow primrose like flowers in late winter and early spring.
 18-24 in. B&B..... 1.25
 2- 3 ft. B&B..... 1.75

OLEA FRAGRANS (Tea Olive). Evergreen with small, white fragrant flowers that blooms nearly all winter. Moderate growth.
 12-18 in. B&B..... 1.25
 18-24 in. B&B..... 2.00
 1 Gallon cans..... 1.25

LAUROCERASUS CAROLINIANA (Cherry Laurel). A splendid native evergreen tree with bright shiny leaves. May be used as shade trees where unpruned, or can be sheared to cones and hedges.
 3-4 ft. B&B..... 2.50
 4-5 ft. B&B..... 3.50
 5-6 ft. B&B..... 4.50

PITTOSPORUM TOBIRA. A splendid evergreen shrub with shiny dark green foliage. Can be pruned to any desired size or shape and does well in sun or shade.
 12-18 in. B&B..... 1.25
 18-24 in. B&B..... 1.75
 2- 3 ft. B&B..... 2.75
 1 Gallon cans..... 1.00

LIGUSTRUM LUCIDUM (Waxed Leafed Ligustrum). Very bushy evergreen with dark green waxy leaves and panicles of white flowers followed by large bunches of black berries. One of the basic landscape plants and can be used for many purposes.
 18-24 in. B&B..... 1.00
 2- 3 ft. B&B..... 1.50
 3- 4 ft. B&B..... 2.50

PITTOSPORUM VARIEGATED. Variegated form with light green and white leaves. Quite striking.
 1 Gallon cans..... 1.25

PHOTINA GLABRA. New growth of this plant is vivid red and very attractive among other evergreens. Should be clipped often to induce new growth.
 Price on next page.

CONIFEROUS EVERGREENS

PHOTINIA SERRULATA. Another variety that has a pinkish new growth, also serrated leaves. More compact growth and heavier leaves than the *glabra*.

Prices above two varieties.

18-24 in. B&B.....	1.50
2- 3 ft. B&B.....	2.25
3- 4 ft. B&B.....	3.25
1 Gallon cans.....	1.00

PYRACANTHA FORMOSANA. The showiest of this family. Large, bright red berries in clusters. On older plants berries almost cover entire plant. About the same spread as height.

18-24 in. B&B.....	1.75
2- 3 ft. B&B.....	2.50
3- 4 ft. B&B.....	3.50
4- 5 ft. B&B.....	6.00
1 Gallon cans—18-24 in.....	1.50
1 Gallon cans— 2- 3 ft.....	2.00

RAPHIOLEPIS JAPONICA (Japanese Hawthorn). Handsome, hardy evergreen shrub with rather thick bright green leaves, and dense clusters of white flowers in the spring.

18-24 in. B&B.....	2.00
2- 3 ft. B&B.....	3.00

SEVERINIA BUXIFOLIA. Evergreen shrub with small boxwood-like leaves and thorns. White sweet scented flowers followed by black berries.

12-18 in. B&B.....	1.25
18-24 in. B&B.....	2.00
2- 3 ft. B&B.....	2.50



VIBURNUM ODORATISSIMUM. Vigorous growth with large medium green rather thick leaves. White fragrant flowers.

12-18 in. B&B.....	1.00
18-24 in. B&B.....	1.50
2- 3 ft. B&B.....	2.00
3- 4 ft. B&B.....	3.00

VIBURNUM SUSPENSUM. A low spreading grower with somewhat leathery leaf that is very attractive. A profusion of white flowers in late winter.

12-18 in. B&B.....	1.25
18-24 in. B&B.....	2.00
1 Gallon cans.....	1.00



BIOTA AUREA NANA (Dwarf Golden Arbor Vitae). The well-known dwarf golden Arbor Vitae. Compact and well shaped. Holds up well under heat.

12-18 in. B&B.....	1.50
18-24 in. B&B.....	2.25
24-30 in. B&B.....	3.00

BIOTA BONITA (Dwarf Globe Arbor Vitae). This is a beautiful rich green variety, dwarf and of slow growth. It is cone-shaped and rather broad.

12-18 in. B&B.....	1.50
18-24 in. B&B.....	2.25

BIOTA EXCELLSA. Pyramidal Arbor vitae cone-shaped, bright green. A little broader at base than *B. Pyramidalis*.

2-3 ft. B&B.....	1.75
3-4 ft. B&B.....	2.50
4-5 ft. B&B.....	3.25
5-6 ft. B&B.....	4.00

BIOTA PYRAMIDALIS. Well-known pyramidal Arbor vitae. Fairly slender in habit and a good grower.

2-3 ft. B&B.....	1.75
3-4 ft. B&B.....	2.50
4-5 ft. B&B.....	3.25
5-6 ft. B&B.....	4.00

CEDRUS DEODARA (Deodar Cedar). The well known blue green pyramidal cedar so often used for a living Christmas tree. Makes a handsome specimen tree.

1 Gallon cans.....	1.50
--------------------	------

JUNIPERUS EXCELLSA STRICTA (Greek Juniper). Slow growing blue-green juniper. Rather irregular in shape.

12-18 in. B&B.....	1.25
18-24 in. B&B.....	1.75
24-30 in. B&B.....	2.50

JUNIPERUS PFITZERIANA (Pfitzers Juniper). Forms a low, wide spreading head of bluish-green foliage. Very interesting and beautiful.

12-18 in. spread B&B.....	1.25
18-24 in. spread B&B.....	1.75
24-30 in. spread B&B.....	2.50
30-36 in. spread B&B.....	3.00

JUNIPERUS SYLVESTRIS (Japanese Juniper). One of the best conifers for the lower South. Needle-shaped leaves, bright to dark green. Upright growth and shears readily.

18-24 in. B&B.....	1.50
2- 3 ft. B&B.....	1.75
3- 4 ft. B&B.....	2.50
4- 5 ft. B&B.....	3.50



PODOCARPOS MACROPHYLLA MAKI (Yew Tree). A handsome evergreen with rather dark, green foliage. Naturally makes a vase-shaped growth. Quite hardy.

PODOCARPOS CHINENSIS (Chinese Yew).

A beautiful upright evergreen tree that may reach a height of 40 feet if left to grow naturally. The leaves, to 4 inches long, are narrow, glossy dark green and paler beneath. Prices above two varieties.

18-24 in. B&B.....	1.50
2- 3 ft. B&B.....	2.00
3- 4 ft. B&B.....	3.50
1 Gallon cans.....	1.00

RETINOSPORA ERICOIDES (Cedar Cypress). This is a beautiful conifer, dense and compact in growth. Naturally it is an upright grower and may be pruned in very narrow columnar shape. The foliage is a light bright green.

1 Gallon cans.....	1.00
3-4 ft. B&B.....	2.00
4-5 ft. B&B.....	2.50

RETINOSPORA VEITCHI (Moss Cypress). Silvery blue foliage. A handsome form that grows rapidly and shears well. Erect in growth.

18-24 in. B&B.....	1.25
2- 3 ft. B&B.....	2.00
3- 4 ft. B&B.....	2.50

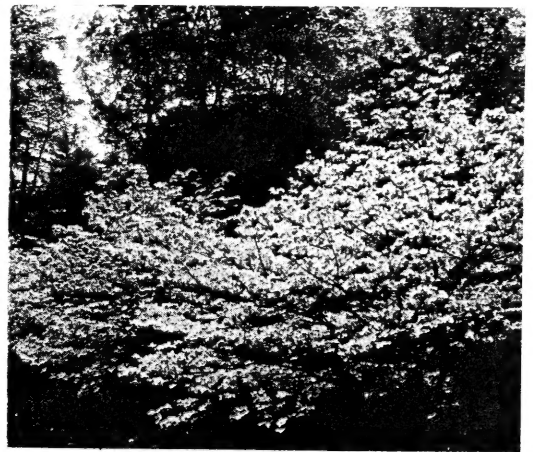
MISCELLANEOUS TREES AND SHRUBS

ALBIZZIA JULIBRISSIN (Mimosa). A small, hardy, deciduous tree with low, spreading, flat-topped head and finely divided, dark green leaves. It blooms in the summer, bearing large clusters of pink flowers.

2-3 ft. Bare Roots.....	1.00
3-4 ft. Bare Roots.....	1.50
4-6 ft. Bare Roots.....	2.00

CERCIS CANADENSIS (Redbud). The American Redbud or Judas Tree is a small, nicely shaped, deciduous tree with rounded leaves and produces an abundance of rosey pink flowers in early spring. As the flowers appear before the foliage, a Redbud in full flower is a lovely picture.

2-3 ft. Bare Roots.....	.75
3-4 ft. Bare Roots.....	1.00
4-6 ft. Bare Roots.....	1.50
6-8 ft. Bare Roots.....	2.50



CORNUS FLORIDA (Dogwood). Small tree or large shrub with a spreading top. Pure white flowers come early in the spring followed by scarlet fruits. Well-known and well loved.

2-3 ft. Bare Roots.....	1.00
3-4 ft. Bare Roots.....	1.50
4-5 ft. Bare Roots.....	2.50
5-6 ft. Bare Roots.....	3.00
For balled and burlapped trees add \$1.00 to above.	

CYDONIA JAPONICA (Flowering Quince).

The earliest deciduous shrub to flower. Its leafless branches displaying the brilliant rosy red flowers in January, and if cut before that time and placed in water in house will even open up in December.

18-24 in. Bare Roots.....	1.00
2- 3 ft. Bare Roots.....	1.50



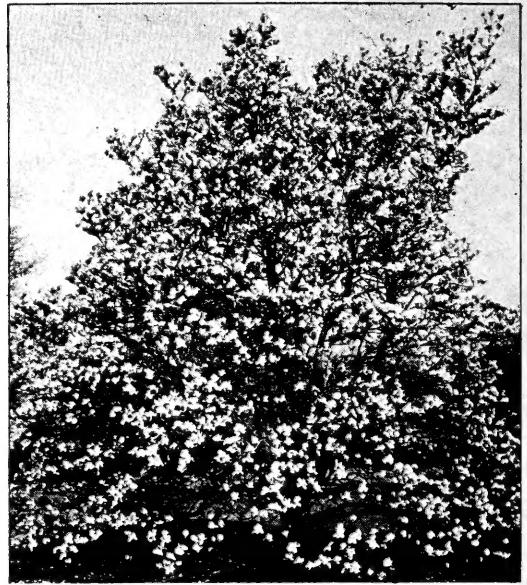
COCOS AUSTRALIS PALM. One of the hardiest of palms, with graceful blue-green foliage, producing a very fine effect. Since the plant is dwarf in growth, it is especially good for parkways and other formal plantings as well as for pots and urns.

18-24 in. B&B.....	2.50
2- 3 ft. B&B.....	3.00
3- 4 ft. B&B.....	4.50
1 Gallon cans.....	1.25



HYDRANGEA HORTENSIS (French Hydrangea). Long a favorite of Florida gardens, with its large, bold foliage and heads of blue flowers that are immense.

12-18 in. Bare Roots.....	.75
18-24 in. Bare Roots.....	1.00
2- 3 ft. Bare Roots.....	1.50
1 Gallon cans.....	.85



M. SOULANGEANA NIGRA (Chinese Magnolia). Large flowers that are dark purple outside and pale inside. Buds form in the winter months and bloom in late winter. Makes a quick growth and forms a large shrub anywhere. Very showy.

18-24 in. B&B.....	2.00
2- 3 ft. B&B.....	2.50
1 Gallon cans.....	1.50
2 Gallon cans.....	2.00

LAGERSTROEMIA INDICA (Crepe Myrtle).

Among the most important shrubs of the South, and as valuable here as the lilac in the North. A vigorous, well-known plant that will attain a height of 15 to 20 feet, and be an immense bouquet of flowers in the summer and fall. Attracts much attention especially from visitors of the North.

Very hardy. Watermelon Red, Purple and Pink.

18-24 in. Bare Roots.....	.60
2- 3 ft. Bare Roots.....	.75
3- 4 ft. Bare Roots.....	1.00
4- 5 ft. Bare Roots.....	1.50
5- 6 ft. Bare Roots.....	2.00

LIRIOPE GRAMINIFOLIA. A low-growing broad-leafed grass with spikes of lavender flowers. Excellent in borders or shady places.

Medium Clumps—4x4 in.....	.35
Large Clumps—6x6 in.....	.50

CAMELLIAS ON OWN ROOT GROUP 1

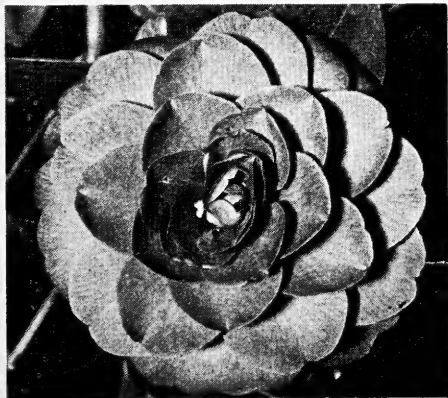
- ALBA PLENA.** Large imbricated white. Early bloomer. Very fine white. 12-18 in. to 18-24 in.
- GIGANTEA.** Immense semi-double. Red with white markings. Sometimes mostly white. 18-24 in. to 30-36 in.
- IMURA.** Very fine white semi-double flower. Large with recurved petals. 12-18 in. to 24-30 in.
- LADY JANE GREY.** Semi-double. Large red and white flower. Excellent. 12-18 in. to 24-30 in.
- MATHOTIANNA RUBRA.** Very large double red. Free blooming. One of the best. 12-18 in. to 30-36 in.
- MIKENJAKU.** Very large semi-double. Red and white blooms. Very beautiful. 12-18 in. to 30-36 in.
- ROSEA SUPERBA.** Deep pink sport of Mathotiana Rubra. Very large double flower, red, 12-18 in. to 18-24 in.
- VARIEGATED EMPRESS.** Immense semi-double. Pink with white blotches. 12-18 in. to 24-30 in.
- WM. S. HASTIE.** Full double, dahlia flowered dark red. 12-18 in. to 24-30 in.

PRICES ON OWN ROOT, GROUP 1

12-18 in. B&B.....	\$2.00
18-24 in. B&B.....	3.00
24-30 in. B&B.....	3.50
30-36 in. B&B.....	4.50

CAMELLIAS ON OWN ROOT GROUP 2

- AKEBONO.** Semi-double. Clear pink. Slightly fragrant. 12-18 in. to 30-36 in.
- ANNA BRUNNEAU.** Very large double salmon pink. Does best in shade. 12-18 in. to 24-30 in.
- BEAUTY OF HOLLAND.** A Herme sport deep pink with white spots. 12-18 in. to 3-4 ft.



- CELESTINE.** Large, double, rose pink flower. 12-18 in. to 30-36 in.
- CHANDLERI ELEGANS.** Very large semi-double. Deep pink and white. Some blooms have many small petals in center. 12-18 in. to 24-30 in.
- CHEERFUL.** Very double, bright cherry red with high pointed center. 12-18 in. to 3-4 ft.
- CUP OF BEAUTY.** Semi-double. Deep pink. Resembles cup and saucer when partly open. 12-18 in. to 30-36 in.
- DEBUTANTE.** Peonyform. Delicate pink, early bloomer. 12-18 in. to 36-36 in.
- DIAKAGURA.** Very early bloom, shell pink splashed white. 12-18 in. to 24-30 in.
- EMPRESS.** Immense, semi-double. Pink with compact yellow stamens in center. Fine. 12-18 in. to 30-36 in.
- GLORY de NANTES.** Large semi-double, very deep rose, long yellow stamens. 12-18 in. to 30-36 in.
- HERME.** Large double. Light rose pink bordered with white. 12-18 in. to 3-4 ft.
- LADY VAN SITTART.** Semi-double, pink to red, depending on temperature. Recurved petals. 12-18 in. to 30-36 in.
- LILA BRANCH.** Medium size double salmon pink. Quite profuse in bloom. 12-18 in. to 24-30 in.
- MILLE BEAU.** Peonyform flowers of various shades from almost white to red. No two flowers exactly alike. 12-18 in. to 3-4 ft.
- MONARCH.** Peony-type of deep pink, often spotted with white. Blooms often measure six inches. 12-18 in. to 30-36 in.
- MONJISU.** Semi-double. Red and white flowers. Somewhat recurved petals. 12-18 in. to 24-30 in.
- NOBLISSIMA.** Double peonyform, solid white flower. Golden stamens between the petals. 12-18 in. to 30-36 in.
- PERFECTION ALBA.** Full double. Pure white, medium size. 12-18 in. to 24-30 in.
- PINK HERME.** Peonyform. Pink with stamens visible. 12-18 in. to 30-36 in.
- PINK PERFECTION.** Shell pink and, as its name implies, this camellia is really perfection. 12-18 in. to 3-4 ft.
- POPE PIUS IX.** Deep red full imbricated flowers. Large. 12-18 in. to 24-30 in.
- PROFESSOR SARGENT.** Peonyform, almost round flowers. Crimson. Very hardy. 12-18 in. to 30-36 in.
- PURITY.** Pure white, double. Long season of bloom and cold resistant. 12-18 in. to 30-36 in.
- RAINY SUN.** Large, deep pink semi-double. Leaves rather narrow and twisted. 18-24 in. to 30-36 in.
- SENATOR DUNCAN U. FLETCHER.** Large peony-type red flower. Excellent. 18-24 in. to 30-36 in.
- VICTOR EMMANUEL.** Loose peony-type. Very large. Deep velvety red. 12-18 in. to 3-4 ft.

PRICES ON OWN ROOT, GROUP 2

12-18 in. B&B.....	\$1.75
18-24 in. B&B.....	2.25
24-30 in. B&B.....	2.75
30-36 in. B&B.....	3.75
3- 4 ft. B&B.....	6.00

GRAFTED CAMELLIAS, RARE VARIETIES

GROUP 1

- ADOLPHE AUDUSSON VARIEGATED.** Large semi-double. Deep red, creamy white variegation. 12-18 in. to 30-36 in.
- ALLEEN.** Predominantly white sport of Donckelari. Bright red edges and spots. 12-18 in. to 30-36 in.
- FIMBRIATA SUPERBA.** Semi-double. Deep flame red, wavy serrated petals. 12-18 in. to 30-36 in.
- FRED SANDER.** Medium size flower, semi-double, with curled and fimbriated petals. Bright crimson red and some spotted with white. 12-18 in. to 30-36 in.
- GENERAL GEORGE PATTON.** Seedling of Purity. Flower medium, full double, imbricated, bright pink. 12-18 in. to 30-36 in.
- HIGH HAT.** Sport of Daikagura. Large flower, loose peonyform, pale pink. Grafts. 12-18 in. to 24-30 in.
- IWANE-SHIBORI.** Semi-double, cherry-red, mottled white, but with an occasional solid red flower. Conspicuous and beautiful. Rather slow, compact grower, with dark, glossy foliage. 12-18 in. to 24-30 in.
- KENNEY.** Very large, irregular double; deep pink and white variegated. Upright growth, heavy wood, large foliage. Has the appearance of being an extra-fine Lady Jane Grey, but a more reliable and perfect bloomer. Very choice. 12-18 in. to 30-36 in.
- MAGNOLIAFLORA.** Large semi-double. Recurved petals, light flesh-pink. 12-18 in. to 30-36 in.
- MARY CHARLOTTE.** Mid-season. Medium large. Anemone form of light pink. A very good sort. 12-18 in. to 30-36 in.
- MRS. CHARLES COBB.** Large semi-double, loose peony-type. Dark crimson red, almost black. 12-18 in. to 24-30 in.
- PRIDE OF DESCANSO.** Very large, semi-double; pure white. One of the famous "S" varieties. 12-18 in. to 30-36 in.
- PRINCESS NAGASKI.** A beautiful camellia with large semi-double soft pink blossoms marbled white and rose pink. It makes a vigorous, low spreading type growth. 18-24 in. to 30-36 in.
- VILLE de NANTES.** Very fine large semi-double. Red white variegation, has "rabbit ear" petals in center standing up from flower. 12-18 in. to 30-36 in.
- WHITE EMPRESS.** Very large, pure white, golden stamens. In popularity, this is the leading semi-double Camellia. 12-18 in. to 24-30 in.
- WHITE QUEEN.** Very large semi-double. White. 12-18 in. to 24-30 in.

PRICES RARE VARIETIES, GROUP 1

18-24 in. B&B.....	\$4.00
24-30 in. B&B.....	5.00
30-36 in. B&B.....	7.00

GRAFTED CAMELLIAS FINE VARIETIES

GROUP 2

- ADMIRAL NIMITZ.** Full double large pink flowers. Habit of growth similar to laurel leaf. 18-24 in. to 3-4 ft.
- ADOLPHE AUDUSSON.** Deep red, semi-double. Very large. Compact growth. Very fine. 12-18 in. to 30-36 in.
- ASPACIA (Variegated Emperor of Russia).** Semi-double, red with white blotches. 12-18 in. to 30-36 in.
- AUNT JETTY.** Red semi-double. Flowers are large, heavy bloomer. 12-18 in. to 3-4 ft.
- CAPT. MARTIN'S FAVORITE.** Medium size flower, full double, imbricated symmetrically. Deep pink color marbled with white. Early to mid-season. 12-18 in. to 30-36 in.
- CARDINAL RICHELIEU.** Free flowering peonyform red. 24-30 in. to 3-4 ft.
- CATHERINE CATHCART.** Large, imbricated, soft pink with white spots. 12-18 in. to 24-30 in.
- C. M. HOVEY (Mathotiana Rubra Variant).** Deep red, white variegated. Very large. 12-18 in. to 3-4 ft.
- DIAKAGURA.** Very early bloom, shell pink splashed white. 12-18 in. to 24-30 in.
- DONCKELARI.** Large semi-double. Red, white blotches. Good. 12-18 in. to 24-30 in.
- IMURA.** Very fine white semi-double flower. Large with recurved petals. 12-18 in. to 5-6 ft.
- KUMASAKA.** Deep pink loose peony-type. Form similar to Herme. 12-18 in. to 30-36 in.
- LA REINE.** Very large semi-double, deep rose pink. Stamens intermixed with petals. 12-18 in. to 18-24 in.
- LADY JANE GREY.** Semi-double. Large red and white flower. Excellent. 12-18 in. to 3-4 ft.
- LAUREL LEAF.** Flowers large, full double with numerous narrow petals recurved at ends. Light salmon rose, marbled white. 12-18 in. to 30-36 in.
- LETITIA SCHRAEDER.** Very large red peonyform, dark red. 12-18 in. to 18-24 in.
- LINDSAY NEIL.** Semi-double. Loose peony-type. Very dark red with white variegations. 12-18 in. to 30-36 in.
- MATHOTIANA RUBRA.** Very large double red. Free blooming. One of the best. 12-18 in. to 4-5 ft.
- ROSEA SUPERBA.** Deep pink sport of Mathotiana Rubra. Very large double flower. 12-18 in. to 30-36 in.
- ROSE DAWN VARIEGATED.** Large, complete, imbricated double, rose-pink. Often called the Pink Alba Plena. Very select. 12-18 in. to 30-36 in.

PRICES FINE VARIETIES, GROUP 2

18-24 in. B&B.....	\$ 3.50
24-30 in. B&B.....	4.50
30-36 in. B&B.....	6.00
3- 4 ft. B&B.....	8.00
4- 5 ft. B&B.....	11.00

CAMELLIA SASANQUA

GROUP 1—

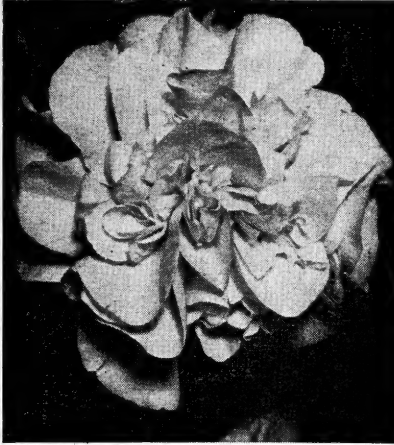
ANNETTE—Two toned variety rather dense growth. Flowers white shading to pink at ends of petals.

CLEOPATRA—Large cherry red flowers. Dark green foliage and compact growth.

MINNIE-NO-YUKI—One of the best whites. Fast grower, and is covered with pure white double flowers.

NEGISHEKO—Flowers single, deep pink. Strong upright growth, dark glossy leaves.

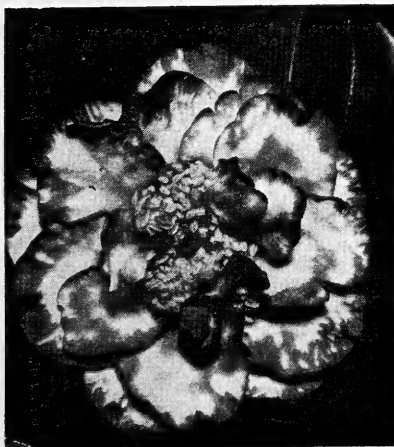
ROSEA—Graceful upright grower, large single pink flowers.



DEBUTANTE



KUMASAKA



LADY JANE GREY

PRICES—GROUP 1

18-24 in. B&B.....	\$2.00
2-3 ft. B&B.....	2.50
3-4 ft. B&B.....	3.25
4-5 ft. B&B.....	5.00



Camellia Sasanqua Rosea

GROUP 2—

DAWN—Flowers large. Single to semi-double, ivory white changing to flesh pink at margin of petals. Quite hardy and blooms over long period.

SETSUGEKKA—Large pure white semidouble flowers, with just a touch of pink at ends of petals.

SHISHIFUKUJIN—Has very large soft pink blooms, sometimes double. Erect growth and handsome foliage.

USU-BENI—Flowers soft pink with some white variegations. Semi-double to loose peony form.

PRICES—GROUP 2

18-24 in. B&B.....	\$2.50
2-3 ft. B&B.....	3.00
3-4 ft. B&B.....	4.00

Camellias in containers can be transplanted at any time, and we now have a very good stock in the following varieties. These are in 1-gallon and 2-gallon cans, and have heavy root systems.

GROUP 1 CAMELLIAS

- Adolphe Audusson
- Aspacia
- Daikagura
- Debutante
- Empress
- Hi-Hat
- Lady Jane Grey
- Mathotiana rubra
- Pink Star
- Pride of Descanso
- Rosea superba

PRICES—GROUP 1

1 Gallon Cans.....	\$1.25
2 Gallon Cans.....	1.75



**You
can
plant
these
anytime**

**Camellias
in
Containers**



GROUP 2 CAMELLIAS

- Akebono
- Alba Plena
- Anna Bruneau
- Auguste del Fosse
- Aunt Jetty
- Beauty of Holland
- Chandleri Elegans
- Cheerful
- Cup of Beauty
- Derbyana
- Duncan Bell
- Empress
- Flame Variegated
- Harlequin
- Herme
- H. A. Downing
- Kumasaka
- Lindsey Neil
- Lady Jane Grey
- La Peppermint
- Luries Favorite
- Martha Brice
- Mille Beau
- Monjisu
- Monarch
- Moonlight
- Perfection Alba
- Pink Elizabeth
- Pink Perfection
- Princess Nagaski
- Purity
- Rev. John Bennett
- Rev. John Drayton
- Victor Emmanuel
- White Perfection
- Wm. S. Hastie

PRICES—GROUP 2

1 Gallon Cans.....	\$1.00
2 Gallon Cans.....	1.50

CAMELLIA SASANQUA

- Cleopatra
- Dawn
- Rosea
- Snow on the Mountain

Prices Same as Group 2 Above

INDIAN AZALEAS

BRILLIANT. Early to midseason. Compact, bushy plants with small leaves. Free bloomer, bearing flowers of a deep rose-pink.

DUC de ROHAN. Medium-sized, salmon-pink.

GEORGE FRANC. A compact grower with very large pink flowers, shading to red in the center. This variety blooms early and has as much or more spread than height.

ELEGANS. The fastest grower of any pink variety. A beautiful clear pink flower coming into bloom fairly early in the season. The bush makes a rank growth, spreads out well and is the top variety among the pink types.

FORMOSA. The giant among azaleas. Lavender flowers of very large size. The largest leaves of any azalea, deep green. Compact and heavy bush which will outgrow any other Evergreen Azalea. Formosa is hardy, stands up and grows well, even under adverse conditions. A beautiful all-year evergreen as well as a persistent flowering one.

INDICA ALBA. Blooms later than Fielder's White. Pure white and very hardy.

IVERYANA. Almost pure white, but most flowers have a fine pencilling of rose-pink which is visible at close range, but from 10 feet or more the blooms seem all white. Rather low and spreading in growth. Blooms in February and March.

PRESIDENT CLAY. An early and free bloomer having bright, brick-red flowers in profusion. This is the most vigorous-growing variety in the red sorts and one of the hardiest. It is in the same class as Elegans and Formosa as to vigor of growth.

PINK MACRANTHA. One of the most compact growers there is. Has a clear pink flower and blooms very late in the season, with a few flowers coming on the plants till June. An extremely hardy variety, never injured by cold.

PRIDE OF DORKING. Rose-red, large flower, late bloomer.

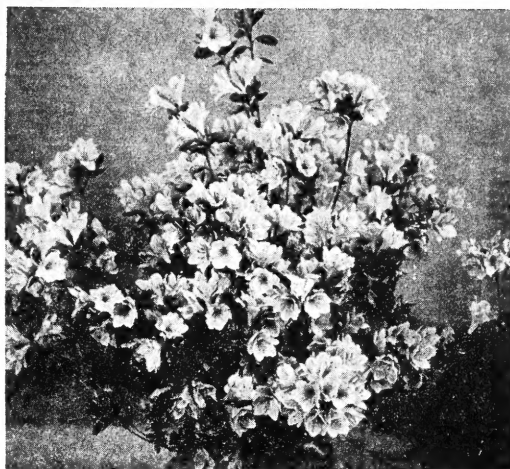
PRIDE OF MOBILE. Large, bright-pink flowers. Blooms in great profusion.

PRINCE OF ORANGE. Rather spreading variety with deep orange-red flowers.

VERVAINE. Late. Rather compact. Flowers. White and pink variegated.

PRICES

8-12 in. B&B.....	\$.50
12-15 in. B&B.....	.75
15-18 in. B&B.....	1.00
18-24 in. B&B.....	1.50
24-30 in. B&B.....	2.00
30-36 in. B&B.....	3.00
3- 4 ft. B&B.....	5.00



KURUME AZALEAS

CORAL BELLS. Compact grower with small, round, glossy leaves. The dainty, bell-shaped, pink flowers are not large but it is a very profuse bloomer and one of the most popular varieties with florists.

CHRISTMAS CHEER. Compact grower with small shiny leaves. The flowers of deepest crimson are small but very attractive. One of the best varieties.

HINODEGIRI. Slow, compact grower, but its fiery red flowers will literally smother the entire plant, even when they are very small, making it one of the most desirable pot-plants.

PINK PEARL. Large, most beautiful pink blooms, shaded lighter toward center, with prominent markings, borne in large clusters.

SNOW. Good size hose-in-hose flowers of purest white among beautiful glossy leaves. Liked by all.

PRICES KURUME AZALEAS

1 Gallon Cans.....	\$.90
8-12 in. B&B.....	1.00
12-15 in. B&B.....	1.25
15-18 in. B&B.....	1.75

TERMS OF BUSINESS:

Except where otherwise stated, all prices listed are F.O.B. Monticello, Fla. Terms Cash with order, or 25% cash, balance C.O.D.

If your express office is different from your Post Office please note this on order. Unless otherwise specified trees will be shipped by express.

Plants marked "B&B" are shipped with a ball of earth around the roots, and will weigh from 15 pounds to 50 or 60 pounds depending on size. Plants not so marked are shipped bare-root packed in moss, so they do not weigh much.

MONTICELLO NURSERY CO.
MONTICELLO, FLORIDA



GRAFTED ROSE BUSHES

EDITOR McFARLAND. HT. Strong growing; free flowering. Clear deep rose-pink. Good form.

ETOILE DE HOLLANDE. HT. The finest red Rose in the world, without exaggeration. Flowers are crimson, with a velvety sheen and fine fragrance.

KAISERIN AUGUSTE VIKTORIA. HT. Creamy buds and lovely white flowers tinted lemon in the center. Deliciously fragrant.

LOUIS PHILLIPPE. Very dark red. Holds its foliage the year around and blooms every month in Florida.

LUXEMBOURG. HT. Does very well in the South. Rich apricot-yellow shaded copper, lighter yellow at tips of petals.

MRS. CHARLES BELL. HT. a sister of the famous Radiance and possessing the same vigor. Flowers lovely shell-pink.

PINK RADIANCE. HT. The universally known deep pink Rose whose vigorous growth is a yardstick by which to measure other varieties.

PRESIDENT HERBERT HOOVER. HT. Scarlet and yellow bud, becoming soft creamy yellow with scarlet marks. One of the most satisfactory garden Roses.

RED RADIANCE. HT. Like Radiance, but a deeper shade of rose-red.

TALISMAN. HT. Colors range from scarlet and gold through rose and yellow, all in the same bloom. Splendid for cutting and in the garden.

PAUL'S SCARLET CLIMBER. The most popular climbing Rose in the Southeast. Brilliant scarlet flowers, borne in great profusion in early spring.

2 YEAR FIELD GROWN ROSES IN ABOVE VARIETIES

Each	12
75¢	\$7.50

U. S. Dept. of Agriculture
Library
Washington 25, D. C.

To

From
Monticello Nursery Co.
Monticello, Fla.

